

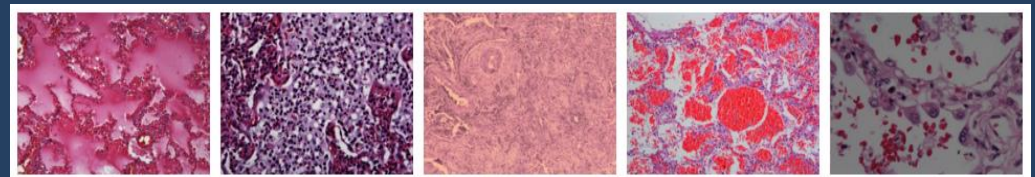
Second International Symposium on Acute Pulmonary Injury Translational Research



Hospital Universitario de Getafe
Ctra. de Toledo (A-42), Km 12'500
28905 Getafe (Madrid)
www.hospitaluniversitariodegetafe.org

November 16nd – 17rd 2017

Organized by the
Intensive Care Unit



Organizing Committee

Oscar Peñuelas
Nicolás Nin
Fernando Frutos-Vivar
Federico Gordo
Arnaud W. Thille

Scientific Committee

José A. Lorente
Giacomo Bellani
Marcus J. Schultz
Guillermo Muñiz Albaiceta

Summary of Meeting

The prevalence of acute pulmonary injury in the ICU is high, and current treatment is only supportive. As recently stated in the *state-of-the-art* pulmonary research conference (Aspen Lung Conference, 2007), where findings from the NHLBI ARDS Network clinical trials were summarized, clinicians and scientists hoped that new pharmacologic, biologic, and genetic approaches for a better understanding of pathogenesis, pathophysiology and treatment of ARDS would improve outcomes in the near future.

We herein announce the second conference on Translational Research in ARDS, held under the auspices of CIBERES and other scientific societies, where current state of the art on research in this area will be reviewed. Speakers have been selected among worldwide-recognized leaders in basic and translational research related to acute pulmonary injury.

At the symposium's conclusion, attendees will be familiar with the evidence used to support the current recommendations for the treatment of patients with ARDS. More importantly they will be introduced to the basic and translational research that will likely alter therapy for this disease within the next several years.

The Organizing Committee

Technical Secretary

AYMON SOLUTIONS

<http://eventos.aymon.es/inspires-2017/?sec=secretaria>

www.aymon.es

TEL.: 91 639 27 86

Fax: 91 639 29 88

PERSONAS DE CONTACTO:

Lola Aguilar // M: 618 564 565 // l.aguilar@aymon.es

Mª José Valero // M: 634 575 363 // mj.valero@aymon.es

Oscar Peñuelas
Intensive Care Unit, Hospital Universitario de Getafe
openuelas@gmail.com

Venue

Aula Magna - Pabellón Docente

Hospital Universitario de Getafe

Ctra. de Toledo (A-42), km 12'500

28905 Getafe (Madrid)

Accreditation

Comisión de Formación Continuada de las Profesiones Sanitarias de la Comunidad de Madrid.

Sistema Nacional de Salud. (Requested)

Registration




The registration fee includes:

- Course documentation
- Attendance at all scientific sessions
- Coffees and lunch

Registration fee:

Members of Participating Scientific Societies	300 €
Non members	350 €

With the scientific support of the following Societies:

 LOS PROFESIONALES DEL ENFERMO CRÍTICO	SEMICYUC	Sociedad Española de Medicina Intensiva y Unidades Coronarias
 SOCIEDAD DE MEDICINA INTENSIVA DE LA COMUNIDAD DE MADRID	SOMIAMA	Sociedad de Medicina Intensiva de la Comunidad de Madrid
 Centro de Investigación Biomédica en Red Enfermedades Respiratorias	CIBERES	CIBER de Enfermedades Respiratorias

The contents and ideas expressed in this symposium solely the responsibility of the authors and do not necessarily represent the official view of the scientific societies.

Sponsors



Faculty

Ana Geke Algera

Depart. of Intensive Care, Amsterdam, the Netherlands

Andrés Esteban

Hosp. Universitario de Getafe, Madrid, Spain

Antonio Artigas

Corporación Sanit. Univ. Parc Taulí, Sabadell, Spain

Antonio Romero

Hosp. Universitario Puerta de Hierro, Madrid, Spain

David van Meenen

Depart. of Intensive Care, Amsterdam, the Netherlands

Esther Barreiro

Hosp. del Mar, Barcelona, Spain

Fabienne D. Simonis

Depart. of Intensive Care, Amsterdam, the Netherlands

Federico Gordo

Hosp. Universitario del Henares, Coslada, Madrid, Spain

Fernando Suarez Sipmann

University Hospital Uppsala, Sweden

Frank van Someren-Greve

Depart. of Intensive Care, Amsterdam, the Netherlands

Giacomo Bellani

University of Milan-Bicocca, Monza, Italy

Guillermo Muñiz-Albaiceta

Hosp. Universitario Central de Asturias, Oviedo, Spain

Javier García

Hosp. Universitario Puerta de Hierro, Madrid, Spain

Jordi Mancebo

University of Montreal, Canada

José A. Lorente

Hosp. Universitario de Getafe, Madrid, Spain

Judith Marín Corral

Hosp. del Mar, Barcelona, Spain

Lieuwe D. Bos

University of Amsterdam. Marie Curie IAPP fellow.

Lluís Blanch

Corporación Sanit. Univ. Parc Taulí, Sabadell, Spain

Lorenzo Ball

University of Genoa, Italy

Lorenzo del Sorbo

University HealthCare Network, University of Toronto

Luigi Pisani

Depart. of Intensive Care, Amsterdam, the Netherlands

Marcelo Gama de Abreu

University Hospital Dresden, Germany

Marcus J. Schultz

ACM, Amsterdam, The Netherlands

Matt Harmon

Depart. of Intensive Care, Amsterdam, the Netherlands

Nicolás Nin

Hosp. Español, Montevideo, Uruguay

Nicole P. Juffermans

Depart. of Intensive Care, Amsterdam, the Netherlands

Oscar Peñuelas

Hosp. Universitario de Getafe, Madrid, Spain

Paolo Pelosi

University of Genoa, Italy

Pouline van Oort

Depart. of Intensive Care, Amsterdam, the Netherlands

Ramón Farré

Universitat de Barcelona-IDIBAPS, Barcelona, Spain

Raquel Herrero

Hosp. Universitario de Getafe, Madrid, Spain

November 16

09:00 – 09:30	Registration	
09:30 – 09:50	Lung histopathology of ARDS	Andrés Esteban
09:50 – 11:10	Factors associated with outcome of ARDS	Moderator: Paolo Pelosi
09:50 – 10:10	Biomarkers in ARDS	Judith Marín
10:10 – 10:30	Subphenotypes of ARDS	Lieuwe D. Bos
10:30 – 10:50	Current ventilatory practices	Marcus J. Schultz
10:50 – 11:10	Lung injury in trauma	Nicole P. Juffermans
11:10 – 11:20	Discussion	
11:20 – 11:40	Coffee break	
11:40 – 13:30	The air compartment in ARDS	Moderator: Giacomo Bellani
11:40 – 12:00	Inhalation Therapies for ARDS	Antonio Artigas
12:00 – 12:10	Protective effects of sevoflurane in VILI	Antonio Romero
12:10 – 12:20	Exhaled breath analysis for the diagnosis of pneumonia.	Pouline van Oort
12:20 – 12:40	Diagnosis of ARDS by exhaled breath analysis	Lieuwe D. Bos
12:40 – 13:00	Optimizing nebulization during mechanical ventilation	Paolo Pelosi
13:00 – 13:20	Impedance Tomography to optimize ventilation	Federico Gordo
13:20 – 13:30	Discussion	
13:30 – 14:30	Lunch	
14:30 – 17:30	'Non-air' compartments in ARDS	Moderator: Antonio Artigas
14:30 – 14:40	The effects of body temperature on ventilation parameters	Matt Harmon
14:40 – 15:00	Clinical applications of esophageal pressure	Jordi Mancebo
15:00 – 15:10	Prone positioning-induced driving pressure changes predict outcome in ARDS	David van Meenen
15:10 – 15:30	Heart-lung interactions from a lung's perspective	Fernando Suarez-Sipmann
15:30 – 15:50	Monitoring recruitment maneuvers at bedside	Javier García
15:50 – 16:00	Quantitative analysis of lung images	Lorenzo Ball
16:00 – 16:10	Discussion	
16:10 – 16:20	Coffee break	
16:20 - 18:00	Translational research in ARDS	Moderator: Marcus Schultz
16:20 – 16:40	Why does red blood cell transfusion cause lung injury	Nicole Juffermans
16:40-17:00	New insights into the mechanisms of acute pulmonary edema	Raquel Herrero
16:30 – 16:50	Strategies for Optimal Lung Ventilation in ECMO for ARDS: The SOLVE ARDS Study	Lorenzo del Sorbo
16:50 – 17:10	Mechanical stretch modulates cell migration in the lungs	Guillermo M. Albaiceta
17:10 – 17:30	Lung decellularization: a methodological tool for investigating damage and repair in ALI	Ramón Farré
17:30 – 18:00	Discussion.	

November 17

09:00 – 11:00	Organ remote affectation in ARDS	Moderator: Lorenzo del Sorbo
09:00 – 09:10	Prevalence and clinical outcome of viral respiratory tract infections in ventilated critically ill patients	Frank Van Someren-Greve
09:10 – 09:20	Macrolide antibiotics and outcome in patients with ARDS	Fabienne D. Simonis
09:20 - 09:40	Tidal volume over end-expiratory lung volume is key for protective mechanical ventilation	Giacomo Bellani
09:40-10:00	Advanced uses of CO2 kinetics in cardiopulmonary monitoring	Fernando Suarez Sipmann
10:00– 10:20	Cognitive rehabilitation in the critically ill patient	Lluís Blanch
10:20 – 10:40	Models of disuse muscle atrophy: therapeutic implications in critically ill patients	Esther Barreriro
10:40 – 11:00	Discussion.	
11:00 – 11:30	Coffee break	
11:30 – 13:30	Monitoring ARDS	Moderator: Óscar Peñuelas
11:30 – 11:50	Spontaneous breathing during mechanical ventilation	Giacomo Bellani
11:50 – 12:10	Hypercapnia in ARDS	Nicolás Nin
12:10 – 12:20	Risk stratification using SpO2/FiO2 ratio and PEEP at initial ARDS diagnosis and after 24 h in patients with moderate or severe ARDS	Luigi Pisani
12:20 – 12:40	Noninvasive ventilation in ARDS	Jordi Mancebo
12:40 – 13:00	The role of Angiotensin system in the development of VIDD	Giacomo Bellani
13:00 – 13:20	Round discussion	
1320 – 14:30	Lunch	
14:30 – 16:30	Title: Strategies of Lung protection	Moderator: Nicole Juffermans
14:30 – 14:50	Diagnosis of ARDS and bilateral lung infiltrates	Nicolás Nin
14:50 – 15:10	Protective ventilation during surgery in high risk patients improves outcomes	Paolo Pelosi
15:10 – 15:30	Association between driving pressure and development of postoperative pulmonary complications in patients undergoing mechanical ventilation	Marcus Schultz
15:30 -15:50	Spontaneous breathing activity in ARDS: friend or foe	Marcelo Gama de Abreu
15:45-16:00	Round discussion	
16:00 – 16:20	Coffee break	
16:20 – 18:30	Cutting the edge in Acute Lung Injury	Moderator: Esther Barreiro
16:20 – 16:40	Extracorporeal CO₂ removal in acute exacerbations of COPD	Lorenzo del Sorbo
16:40-17:00	Antioxidant effect of adult adipose-derived mesenchymal stromal cells in VILI	Oscar Peñuelas
17:00 – 17:10	Effect of PEEP on outcome in animals with uninjured lungs: A systematic review of randomized controlled trials in animals	Ana Geke Algera
17:10 – 17:30	Variable ventilation: from bench to bedside	Marcelo Gama de Abreu
17:30 – 17:50	mRNA interference as a therapeutic approach in ALI	José A. Lorente
17:50 – 18:00	Final discussion.	